

B SERIES-PPI 2-2569

EAN 8422202225692



Red soft injected polyurethane castors, especially indicated to support high-loads up to 40 Kg.

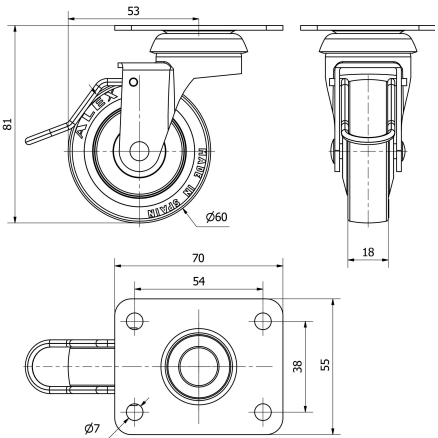
It is used in: display stands, furniture, shelves, stools, clothes racks, catering carts, cabinetmaker's, stands, housekeeping carts, computer tables, small furniture and bedside tables.

PPI: noiseless and undeformable. Easy to move.

Technical Data

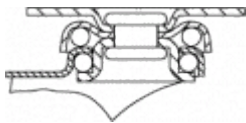
Housing Type	Swivel
Fitting Type	Plate
Braking System	Wheel Brake
Bearing	Plain
Diameter (mm)	60
Width of tyre (mm)	18
Plate dimensions (mm)	70x55
Distance between holes (mm)	54x38
Plate hole diameter (mm)	6
Offset (mm)	53
Overall height (mm)	81
Load	40
Unit Weight of the wheel (kg)	0.26
Volume (cm ³)	486

CAD



To visualize the image with higher resolution and more technical details, please access to the CAD section

Brackets



Made of pressed steel castor up to 2 mm. Finish: Zinc-plated. Ball bearing swivel head. Rubber wheels Ø 50 and 60 mm with threadguards. Manufactured to European standards EN 12528.

Similar products



Wheel



Red polyurethane tyre on black polypropylene centre. 95° shore A
Temperature range: -25° ÷ +80°

