

HLG SERIES-HU 2-3811

EAN 8422202238111



Double castor with steel centre and cast polyurethane tyre with a hardness of 95° Shore A, especially indicated to support high-loads up to 2.500 kg.

It is used in: logistics transport tools, cranes transporting heavy materials and elevating platforms.

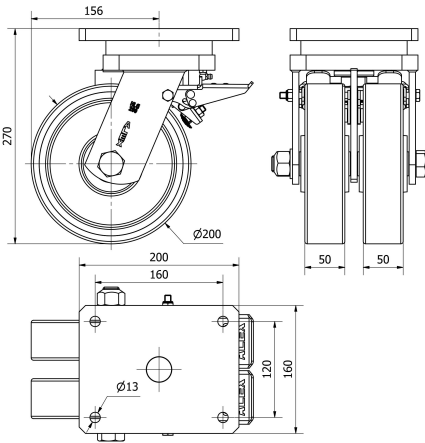
Mainly used in the aeronautic sector, railway and automobile factories.

Castors with high absorption to impacts. Floor protection and high abrasion and wear resistance. Recommended for rough surfaces, broken, with metallic shavings, oil stains, broken glass, grease, gravel.

Technical Data

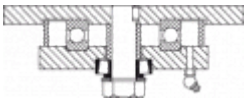
Housing Type	Swivel
Fitting Type	Plate
Braking System	Wheel Brake And Fork
Material	Polyurethane
Hardness of tread	95° SHORE A
Bearing	Ball
Diameter (mm)	200
Width of tyre (mm)	50x2
Plate dimensions (mm)	200x160
Distance between holes (mm)	160x120
Plate hole diameter (mm)	12
Offset (mm)	156
Overall height (mm)	270
Load	2200
Unit Weight of the wheel (kg)	18.667
Volume (cm ³)	11059

CAD



To visualize the image with higher resolution and more technical details, please access to the CAD section

Brackets



Heavy fabricated castors made of welded steel up to 8 mm. Painted black. Combination of thrust ball bearing and tapered roller bearing in the swivel head: the upper for axial efforts and the lower for radial efforts. Totally sealed swivel head, grease nipples on the swivel head and wheel. Manufactured to European standard EN 12532/12533.

Similar products



2-1866



2-1869



2-3829

Wheel

