

## 55 SERIES-PO 4-0312

EAN 8422202403120



Castors with white nylon centre and red polyurethane tyre with a hardness of 90-95° Shore A. Especially indicated to support high-loads up to 600 Kg.

It is used in: logistics transport tools, outdoor areas, internal logistics, carbody factories, mobile platforms, elevating platforms, logistics for military missions material, heavy machinery, mobile cranes, elevating tables and boilers.

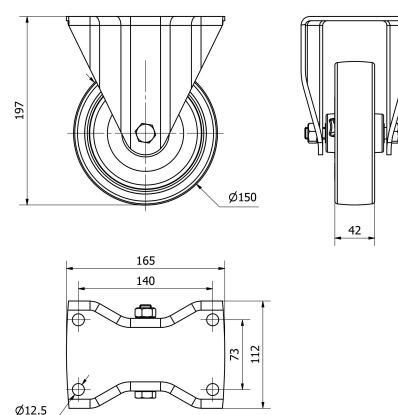
Mainly used in the aeronautic sector, railway and automobile factories.

PO: elastic and noiseless functioning. High floor protection. Noiseless. Long useful life.

### Technical Data

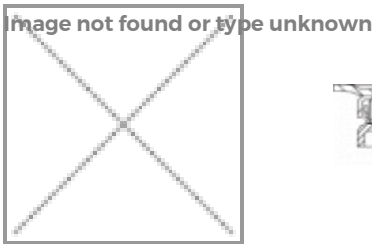
Housing Type	<b>Fixed</b>
Fitting Type	<b>Plate</b>
Braking System	<b>Without Brake</b>
Material	<b>Polyurethane</b>
Hardness of tread	<b>90-95° SHORE A</b>
Bearing	<b>Plain</b>
Diameter (mm)	<b>150</b>
Width of tyre (mm)	<b>42</b>
Plate dimensions (mm)	<b>165x112</b>
Distance between holes (mm)	<b>140x73</b>
Plate hole diameter (mm)	<b>12</b>
Overall height (mm)	<b>197</b>
Load	<b>450</b>
Unit Weight of the wheel (kg)	<b>2.243</b>
Volume (cm <sup>3</sup> )	<b>4468</b>

### CAD



To visualize the image with higher resolution and more technical details, please access to the CAD section

Brackets



Castor made of pressed steel up to 4.5 mm. Zinc plated. Swivel head with roller bearing, especially to support large amounts of axial efforts. Grease nipple in the swivel head. Manufactured to European standard EN 12532/12533.

Similar products



4-0310



4-1302

Wheel



Red polyurethane tyre on white polyamide centre.95° shore A  
Temperature range: -25° ÷ +80°

