

GT SERIES-FT 4-0146

EAN 8422202401461



Castors with reinforced nylon, especially indicated to support high-loads up to 1.250 Kg.

It is used in: logistics transport tools, outdoor areas, internal logistics, mobile platforms, elevating platforms, transport carts, logistics for military missions material, heavy machinery for the construction sector and mobile cranes.

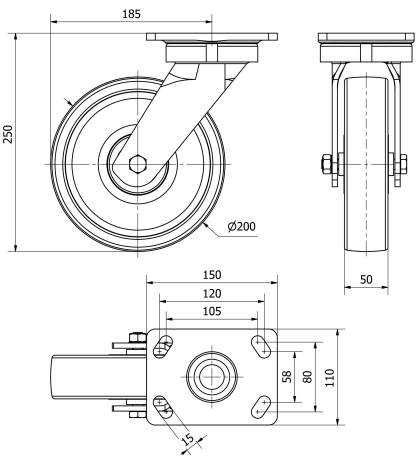
Mainly used in the aeronautic sector, railway and automobile factories. Used in clean rooms.

FT: especially indicated for food and chemical industry applications. Does not leave marks on floor. Reinforced. Canning factories.

Technical Data

Housing Type	Swivel
Fitting Type	Plate
Braking System	Without Brake
Material	Nylon(Polyamide 6)
Bearing	Ball
Diameter (mm)	200
Width of tyre (mm)	50
Plate dimensions (mm)	150x110
Distance between holes (mm)	105x80
Plate hole diameter (mm)	12
Offset (mm)	185
Overall height (mm)	250
Load	1000
Unit Weight of the wheel (kg)	4.22
Volume (cm ³)	7150

CAD



To visualize the image with higher resolution and more technical details, please access to the CAD section

Brackets



Forged kingpinless castor made of steel up to 8 mm. Painted black. Swivel head contains hard steel balls designed to withstand radial and lateral efforts. Totally sealed swivel head with grease nipple. Manufactured to European standard EN 12532/12533.

Similar products



4-0164

Wheel



Reinforced nylon (Polyamid 6) wheel, white colour
Temperature range: -30° ÷ +80°

