

HLB SERIES-FT 2-0469

EAN 8422202204697



Reinforced nylon castors, especially indicated to support high-loads up to 1.250 Kg.

It is used in: logistics transport tools, outdoor area, internal logistics, mobile platforms, elevating platforms, transport cars, logistics for military missions material, heavy machinery in the construction sector, mobile cranes and sport centres.

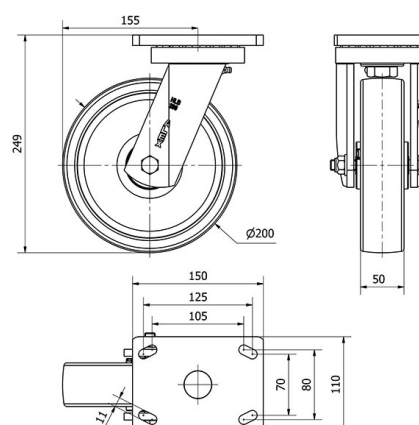
Mainly used in the aeronautic sector, railway and automoblie factories. Clean rooms.

FT: especially indicated for food and chemical industry applications. Does not leave marks on floor. Reinforced. Canning factories.

Technical Data

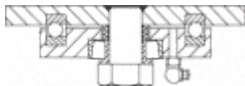
Housing Type	Swivel
Fitting Type	Plate
Braking System	Without Brake
Material	Nylon(Polyamide 6)
Bearing	Plain
Diameter (mm)	200
Width of tyre (mm)	50
Plate dimensions (mm)	150x110
Distance between holes (mm)	105x80
Plate hole diameter (mm)	10
Offset (mm)	155
Overall height (mm)	249
Load	1000
Unit Weight of the wheel (kg)	4.58
Volume (cm ³)	6300

CAD



To visualize the image with higher resolution and more technical details, please access to the CAD section

Brackets



Heavy fabricated castor made of welded steel up to 8 mm.Painted black.Combination of thrust ball bearing and tapered roller bearing in the swivel head: the upper for axial efforts and the lower for radial efforts.Grease nipples on the swivel head and the wheel.Manufactured to European standards EN 12532/12533.

Similar products



2-0478



2-1512



2-3381

Wheel



Reinforced nylon (Polyamid 6) wheel, white colour
Temperature range: -30° ÷ +80°

