

HU SERIES-HLB 2-3431

EAN 8422202234311



Castors with steel centre and cast polyurethane tyre with a hardness of 95° Shore A, especially indicated to support high-loads up to 1.900 Kg.

It is used in: logistics transport tools, outdoor areas, internal logistics, mobile platforms, elevating platforms, transport carts, logistics for military missions material, heavy machinery in the construction sector and mobile cranes.

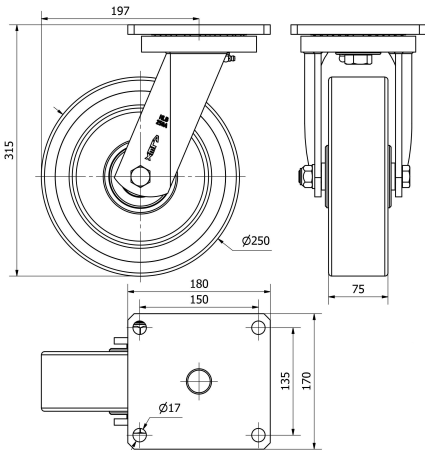
Mainly used in the aeronautic sector, railway and automobile factories.

HU: high absorption to impacts. Unfavourable flooring surface conditions. Rough surfaces, broken, with metallic shavings, oil strains, glasses, grease and gravel.

Technical Data

Housing Type	Swivel
Fitting Type	Plate
Braking System	Without Brake
Material	Polyurethane
Hardness of tread	95° SHORE A
Bearing	Ball
Diameter (mm)	250
Width of tyre (mm)	75
Plate dimensions (mm)	180x170
Distance between holes (mm)	150x135
Plate hole diameter (mm)	16
Offset (mm)	197
Overall height (mm)	315
Load	1500
Unit Weight of the wheel (kg)	16.88
Volume (cm ³)	15369

CAD



To visualize the image with higher resolution and more technical details, please access to the CAD section

Brackets

Heavy fabricated castor made of welded steel up to 8 mm. Painted black. Combination of thrust ball bearing and tapered roller bearing in the swivel head: the upper for axial efforts and the lower for radial efforts. Grease nipples on the swivel head and the wheel. Manufactured to European standards EN 12532/12533.

Similar products



2-3433



2-3742



2-3546

Wheel

