

HLB SERIES-TA 2-3393

EAN 8422202233932



Steel castors, especially indicated to support high-loads up to 1.350 Kg.

It is used in: logistics transport tools, furnaces standing high temperatures (-40° to +300°) and heavy machinery for the construction sector.

Mainly used in the railway sector and automobile factories.

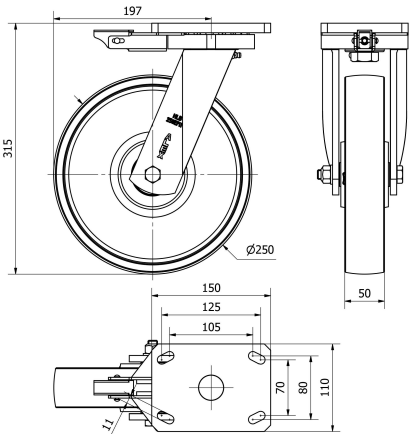
TA: very tough work conditions where the existence of cutting objects, chemical products or high temperatures would destroy other kind of castors. Heavy duty.

For temperatures above 200°C, load (Kg) should be reduced by 40%.

Technical Data

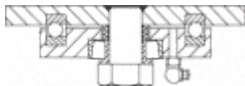
Housing Type	Swivel
Fitting Type	Plate
Braking System	Directional Lock
Material	Cast Iron
Bearing	Ball
Diameter (mm)	250
Width of tyre (mm)	50
Plate dimensions (mm)	150x110
Distance between holes (mm)	105x80
Plate hole diameter (mm)	10
Offset (mm)	197
Overall height (mm)	315
Load	1250
Unit Weight of the wheel (kg)	10.152
Volume (cm <sup>3</sup> )	9425

CAD



To visualize the image with higher resolution and more technical details, please access to the CAD section

Brackets



Heavy fabricated castor made of welded steel up to 8 mm. Painted black. Combination of thrust ball bearing and tapered roller bearing in the swivel head: the upper for axial efforts and the lower for radial efforts. Grease nipples on the swivel head and the wheel. Manufactured to European standards EN 12532/12533.

Similar products



2-2303



2-2304



2-2305

Wheel



Cast iron wheel  
Temperature range: -40° ÷ +300°

Rolling Resistance	Excelent
Noise during the march	Sufficient
Floor Protection	Sufficient