

HLR SERIES-HU 2-3591

EAN 8422202235912



Double castors with steel centre and cast polyurethane tyre with a hardness of 95° Shore A, especially indicated to support high-loads up to 4.000 Kg.

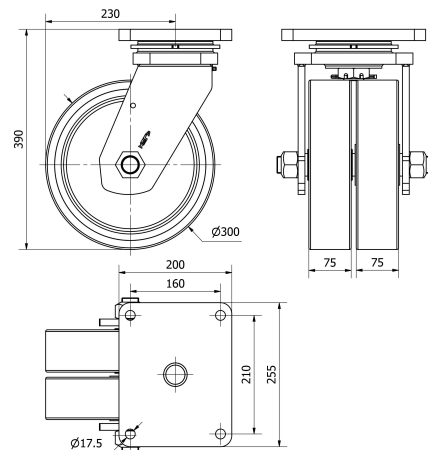
It is used in: logistics transport tools, cranes transporting heavy materials and elevating platforms.

HU: high absorption to impacts. Protection of floors and high resistance to the abrasion wear. Noiseless. Recommended for rough flooring surfaces, uneven, broken, with metallic shavings, oil stains, broken glass, grease and gravel.

Technical Data

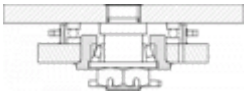
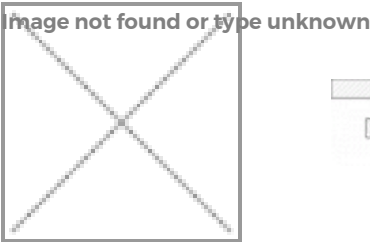
Housing Type	Swivel
Fitting Type	Plate
Braking System	Without Brake
Hardness of tread	95° SHORE A
Bearing	Ball
Diameter (mm)	300
Width of tyre (mm)	75x2
Plate dimensions (mm)	255x200
Distance between holes (mm)	210x160
Plate hole diameter (mm)	16
Offset (mm)	230
Overall height (mm)	390
Load	4000
Unit Weight of the wheel (kg)	44
Volume (cm ³)	27885

CAD



To visualize the image with higher resolution and more technical details, please access to the CAD section

Brackets



Made of welded steel up to 12mm .Black painted finish.
Combination of thrust ball bearing and roller bearing in the head: the upper for axial efforts and the lower for radial efforts.
Protected swivel head, with grease nipple and solid welded central rod. Wheel with precision ball bearings and solid threaded axle. Manufactured to European Standard EN 12532

Similar products



Wheel

