

HLS SERIES-HUAB 2-3543

EAN 8422202235431



Castors with steel centre and cast polyurethane with a ball-shaped tread tyre and a hardness of 95° Shore A, especially indicated to support high-loads up to 800 Kg. With highly resistant spring loaded suspension, ideal in uneven surfaces due to its shock absorption.

It is used in: logistics transport tools, outdoor areas, internal logistics, mobile platforms, elevating platforms, transport carts, logistics for military missions material, heavy machinery for the construction sector and mobile cranes.

Mainly used in the aeronautic sector, railway and automobile factories.

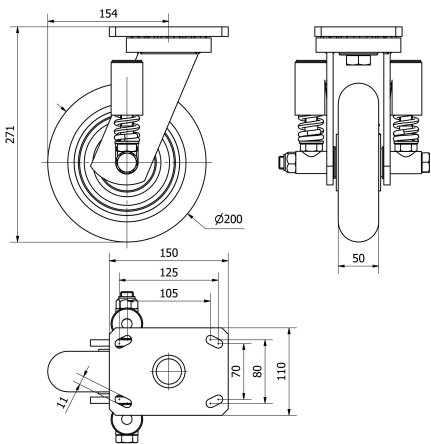
HUAB: easy to use. High absorption to impacts. Unfavourable flooring surfaces conditions. Rough surfaces, broken, with metallic shavings, oil stains, broken glass, grease and gravel.

Low turning resistance and easier rolling.

Technical Data

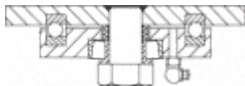
| | |
|-------------------------------|---------------|
| Housing Type | Swivel |
| Fitting Type | Plate |
| Braking System | Without Brake |
| Material | Polyurethane |
| Hardness of tread | 95° SHORE A |
| Bearing | Ball |
| Diameter (mm) | 200 |
| Width of tyre (mm) | 50 |
| Plate dimensions (mm) | 150x110 |
| Distance between holes (mm) | 105x80 |
| Plate hole diameter (mm) | 10 |
| Offset (mm) | 154 |
| Overall height (mm) | 271 |
| Load | 800 |
| Unit Weight of the wheel (kg) | 11.385 |
| Volume (cm ³) | 6826 |

CAD



To visualize the image with higher resolution and more technical details, please access to the CAD section

Brackets



Made of welded steel from 8mm. to 18mm. thickness. Black paint finish. Bracket with highly resistant spring loaded suspension. Spring travel up to 24,5mm for a load of 700kg. Especially designed to absorb impacts, collisions and uneven surfaces. Manufactured according to European Standards EN12532/12533

Similar products



2-3545



2-4043

Wheel



Polyurethane tyre on cast iron centre
Temperature range: -20° ÷ +60°

