

KV SERIES-HG 2-1967

EAN 8422202219677



Castors with steel centre and black rubber tyre, especially indicated to support high-loads up to 750 Kg.

It is used in: logistics transport tools, internal logistics, mobile platforms, elevating platforms, transport carts, logistics for military missions material, heavy machinery for the construction sector and mobile cranes.

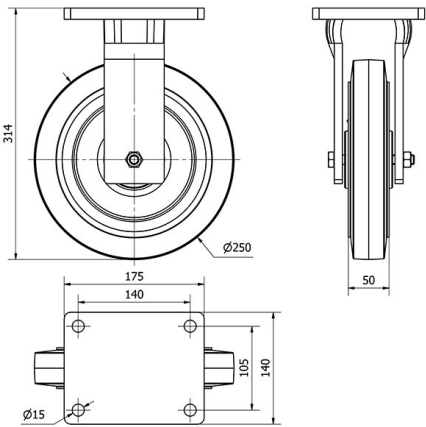
Mainly used in the aeronautic sector, railway and automobile factories.

HG: castors suitable for mechanical traction (elevating driven carts, trailers...) as well as manual. Industry in general.

Technical Data

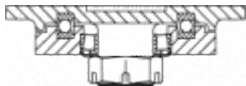
Housing Type	Fixed
Fitting Type	Plate
Braking System	Without Brake
Material	Rubber
Bearing	Ball
Diameter (mm)	250
Width of tyre (mm)	50
Plate dimensions (mm)	175x140
Distance between holes (mm)	140x105
Plate hole diameter (mm)	14
Overall height (mm)	314
Load	700
Unit Weight of the wheel (kg)	9.852
Volume (cm ³)	10990

CAD



To visualize the image with higher resolution and more technical details, please access to the CAD section

Brackets



Fabricated castor made of cast iron up to 10 mm with a forged kingpin. Painted black. Combination of precision thrust bearing and tapered roller bearing in the swivel head. Totally sealed swivel head with grease nipple on the swivel head and wheel. Manufactured to European standard EN 12532/12533.

Similar products



2-1964

Wheel



Rubber tyre on cast iron centre with grease nipple
Temperature range: -20° ÷ +60°

Rolling Resistance	Reasonable
Noise during the march	Excelent
Floor Protection	Excelent