

KV SERIES-TA 4-0428

EAN 8422202404288



Steel castors, especially indicated to support high-loads up to 1.350 Kg.

It is used in: logistics transport tools, furnaces standing high temperatures (-40° to +300°) and heavy machinery for the construction sector.

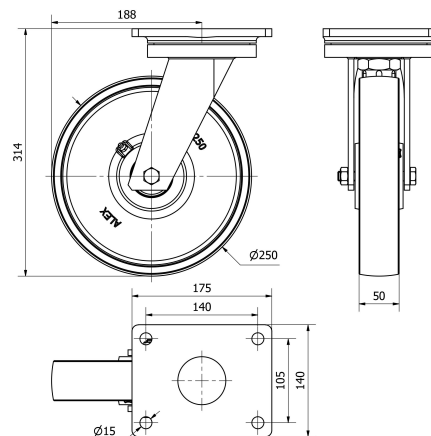
Mainly used in railway and automobile factories.

TA: very tough work conditions where the existence of cutting objects, chemical products or high temperatures would destroy other kind of castors. Heavy duty.

Technical Data

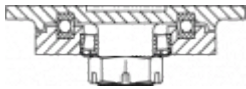
Housing Type	Swivel
Fitting Type	Plate
Braking System	Without Brake
Material	Cast Iron
Bearing	Ball
Diameter (mm)	250
Width of tyre (mm)	50
Plate dimensions (mm)	175x140
Distance between holes (mm)	140x105
Plate hole diameter (mm)	14
Offset (mm)	188
Overall height (mm)	314
Load	1350
Unit Weight of the wheel (kg)	11
Volume (cm ³)	12111

CAD



To visualize the image with higher resolution and more technical details, please access to the CAD section

Brackets



Fabricated castor made of cast iron up to 10 mm with a forged kingpin. Painted black. Combination of precision thrust bearing and tapered roller bearing in the swivel head. Totally sealed swivel head with grease nipple on the swivel head and wheel. Manufactured to European standard EN 12532/12533.

Similar products



4-0429

Wheel



Cast iron wheel
Temperature range: -40° ÷ +300°

Rolling Resistance	Excelent
Noise during the march	Sufficient
Floor Protection	Sufficient