

61 SERIES-HG 4-1297

EAN 8422202412979



Castors with steel centre and black rubber tyre, especially indicated to support high-loads up to 400 Kg.

It is used in: logistics transport tools, repair shops, internal logistics and elevating platforms.

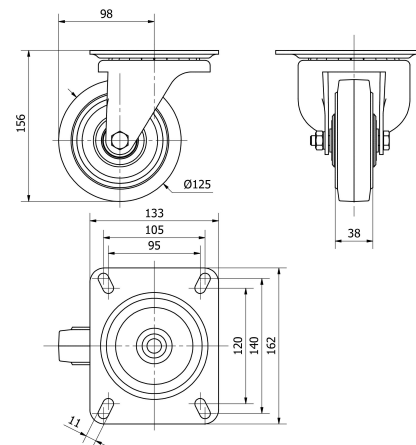
Mainly used in the industrial sector.

HG: castor suitable for mechanical traction (elevating driven carts, trailers...) as well as manual. Industry in general. Noiseless.

Technical Data

Housing Type	Swivel
Fitting Type	Plate
Braking System	Without Brake
Material	Rubber
Bearing	Ball
Diameter (mm)	125
Width of tyre (mm)	38
Plate dimensions (mm)	162x133
Distance between holes (mm)	140x105/120x95
Plate hole diameter (mm)	10
Offset (mm)	98
Overall height (mm)	156
Load	225
Unit Weight of the wheel (kg)	2.937
Volume (cm ³)	3714

CAD



To visualize the image with higher resolution and more technical details, please access to the CAD section

Brackets



Castor built for heavy-duty work.Made of pressed steel up to 4 mm.Finish: Zinc plated.The robust construction of this castor allows for first-rate efficiency, long duration and excellent performance.Manufactured to European standard EN 12532.

Similar products



4-1298

Wheel



Rubber tyre on cast iron centre with grease nipple
Temperature range: -20° ÷ +60°

Rolling Resistance	Reasonable
Noise during the march	Excelent
Floor Protection	Excelent