

61 SERIES-TA 4-0119

EAN 8422202401195



Steel castors, especially indicated to support high-loads up to 680 Kg.

It is used in: logistics transport tools, repair shops, outdoor areas, internal logistics, tool trolleys, tranport tools, elevating platforms, transport carts, ladders, sweeping machines, polishing machines, packaging machines, conveyor belts, mobile cranes, elevating driven carts, boilers, cabinetmaker's, metalworks, agricultural farms, elevating tables, meat industry and containers.

Mainly used in the aeronautic sector, railway, automobile factories, food industry, repair shops and industrial activities.

Suitable for mechanical engineering projects by draftsmen and project executors.

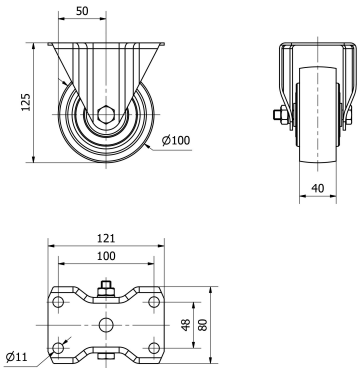
TA: very tough work conditions where the existence of cutting objects, chemical products or high temperatures would destroy other kind of castors. Heavy duty.

For temperatures above 200°C, load (Kg) should be reduced by 40%.

Technical Data

Housing Type	Fixed
Fitting Type	Plate
Braking System	Without Brake
Material	Cast Iron
Bearing	Ball
Diameter (mm)	100
Width of tyre (mm)	40
Plate dimensions (mm)	121x80
Distance between holes (mm)	100x48
Plate hole diameter (mm)	10
Overall height (mm)	125
Load	340
Unit Weight of the wheel (kg)	1.446
Volume (cm ³)	1210

CAD



To visualize the image with higher resolution and more technical details, please access to the CAD section

Brackets



Castor built for heavy-duty work.Made of pressed steel up to 4 mm.Finish: Zinc plated.The robust construction of this castor allows for first-rate efficiency, long duration and excellent performance.Manufactured to European standard EN 12532.

Similar products



4-0106

Wheel



Cast iron wheel
Temperature range: -40° ÷ +300°

Rolling Resistance	Excelent
Noise during the march	Sufficient
Floor Protection	Sufficient