

SL SERIES-HU 4-0785

EAN 8422202407852



Castors with steel centre and cast polyurethane tyre with a hardness of 95° Shore A, especially indicated to support high-loads up to 600 Kg.

It is used in: logistics transport tools, outdoor areas, carbody factories, internal logistics, mobile platforms, elevating platforms, logistics for military missions material, heavy machinery, mobile cranes, elevating tables, carts, equipments and industrial areas.

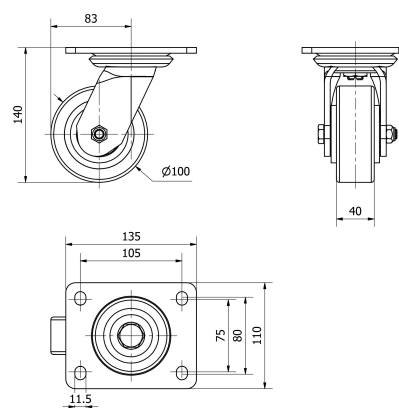
Suitable for mechanical engineering projects by draftsmen and project executors.

HU: rough flooring surfaces, broken, with metallic shavings, oil stains, broken glass, grease and gravel.

Technical Data

Housing Type	Swivel
Fitting Type	Plate
Braking System	Without Brake
Material	Polyurethane
Hardness of tread	95° SHORE A
Bearing	Ball
Diameter (mm)	100
Width of tyre (mm)	40
Plate dimensions (mm)	135x110
Distance between holes (mm)	105x80
Plate hole diameter (mm)	10
Offset (mm)	83
Overall height (mm)	140
Load	350
Unit Weight of the wheel (kg)	2.82
Volume (cm ³)	2318

CAD



To visualize the image with higher resolution and more technical details, please access to the CAD section

Brackets



Made of welded steel up to 6 mm. Finish: Passivated zinc. Swivel head with a hardened double ball raceways to ensure durability and longevity of the castor. Manufactured to European standard EN 12532.

Similar products



4-0788



4-1216

Wheel

