

TV SERIES-HG 2-2046

EAN 8422202220468



Castors with steel centre and black rubber tyre, especially indicated to support high-loads up to 600 Kg.

It is used in: logistics transport tools, repair shops, internal logistics, elevating platforms, sweeping machines, polishing machines and driven carts.

Mainly used in the industrial sector, aeronautic sector, railway and automobile factories.

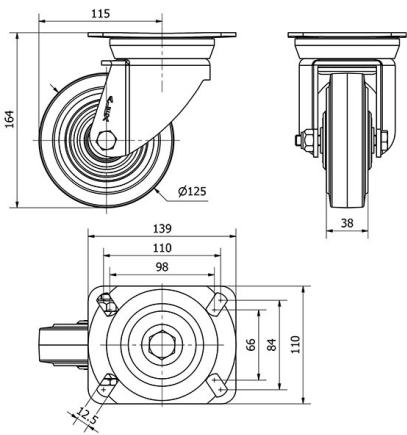
Suitable for mechanical engineering projects by draftsmen and project executors

HG: castor suitable for mechanical traction (elevating driven carts, trailers...) as well as manual. Industry in general. Noiseless. Floor protection.

Technical Data

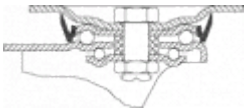
Housing Type	Swivel
Fitting Type	Plate
Braking System	Without Brake
Material	Rubber
Bearing	Ball
Diameter (mm)	125
Width of tyre (mm)	38
Plate dimensions (mm)	139x110
Distance between holes (mm)	105x80
Plate hole diameter (mm)	10
Offset (mm)	115
Overall height (mm)	164
Load	250
Unit Weight of the wheel (kg)	3.224
Volume (cm ³)	3328

CAD



To visualize the image with higher resolution and more technical details, please access to the CAD section

Brackets



Manufactured with pressed steel up to 5 mm. Highly rust-resistant double-chrome coating. Double ball bearing reinforced with hardened ball races. Dust-proof in the sealing swivel head. Manufactured to European standard EN 12532.

Similar products



2-2047



2-2048

Wheel



Rubber tyre on cast iron centre with grease nipple
Temperature range: -20° ÷ +60°

Rolling Resistance	Reasonable
Noise during the march	Excelent
Floor Protection	Excelent