

TV SERIES-TD 2-0015

EAN 8422202200156



Reinforced resin castors, especially indicated to stand high temperatures up to 200° and high-loads up to 700 Kg.

It is used in: furnaces and light machinery.

Mainly used in the industrial sector, aeronautic sector, automobile factories and food industry.

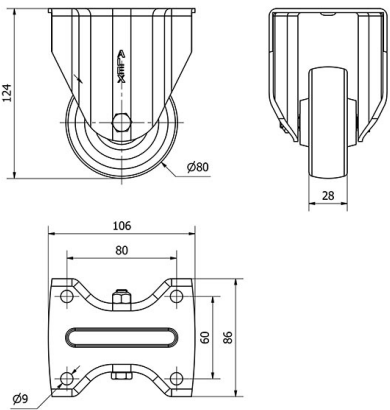
Suitable for mechanical engineering projects by draftsmen and project executors.

TD: reinforced resin castor. Indicated for industrial industry.

Technical Data

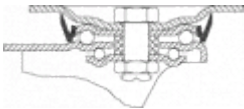
Housing Type	Fixed
Fitting Type	Plate
Braking System	Without Brake
Material	Phenolic Resin Wheel
Bearing	Plain
Diameter (mm)	80
Width of tyre (mm)	28
Plate dimensions (mm)	106x86
Distance between holes (mm)	80x60
Plate hole diameter (mm)	8
Overall height (mm)	124
Load	280
Volume (cm ³)	1130

CAD



To visualize the image with higher resolution and more technical details, please access to the CAD section

Brackets



Manufactured with pressed steel up to 5 mm. Highly rust-resistant double-chrome coating. Double ball bearing reinforced with hardened ball races. Dust-proof in the sealing swivel head. Manufactured to European standard EN 12532.

Similar products



Wheel



Resin wheel up to 200°C when not in continuous use
Temperature range: -40° ÷ +200°

