

ZV SERIES-PGA 2-2395

EAN 8422202223957



Grey rubber castors. Especially indicated to support high-loads up to 135 Kg.

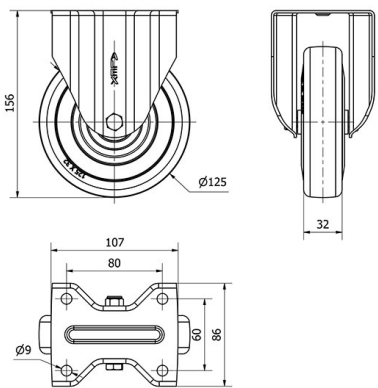
It is used in tool trolleys, tubular carts, internal logistics, transport tools, elevating platforms, repair shops, food trolleys, kitchens, canteens, dining rooms, restaurants, supermarkets, sweeping machines, polishing machines and light machines.

PGA: Smooth and noiseless castor. Does not leave marks on floor.

Technical Data

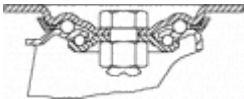
Housing Type	Fixed
Fitting Type	Plate
Braking System	Without Brake
Material	Rubber
Bearing	Ball
Diameter (mm)	125
Width of tyre (mm)	32
Plate dimensions (mm)	107x86
Distance between holes (mm)	80x60
Plate hole diameter (mm)	8
Overall height (mm)	155
Load	135
Unit Weight of the wheel (kg)	1.2
Volume (cm <sup>3</sup> )	1666

CAD



To visualize the image with higher resolution and more technical details, please access to the CAD section

Brackets



Made of pressed steel up to 4 mm.Finish: zinc plated finish.Double ball bearing in the swivel head.Universal model for medium-duty loads.Manufactured to European standards EN 12530/12532.

Similar products



Wheel



Grey rubber tyre on polypropylene centre  
Temperature range: -20° ÷ +60°

