

## ZV SERIES-Grey PS 2-3552

EAN 8422202235523



Grey rubber castors. Especially indicated to support high-loads up to 250 Kg.

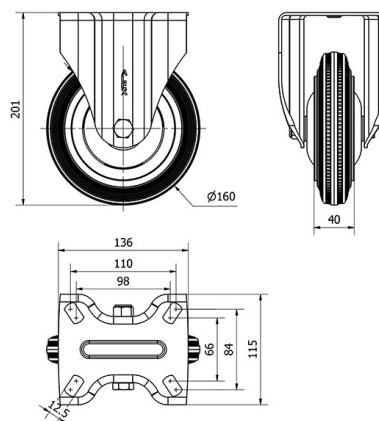
It is used in: tool trolleys, tubular carts, internal logistics, mobile platforms, transport tools, elevating platforms, repair shops, shopping trolleys, kitchen, canteens, dining rooms, restaurants, food industry, logistics for military missions material, tool transport, compressors, ladders, sweeping machines, polishing machines, welding, cement mixers, cranes, packaging machines, conveyor belts, mobile cranes, trailers, light machinery, cabinetmaker's, locksmith's, metalworks, agricultural farms, waste containers, containers, roll containers and transport cages.

PS GREY: smooth and noiseless castor. High floor protection. Absorption to impacts and vibrations. Does not leave marks on floor.

### Technical Data

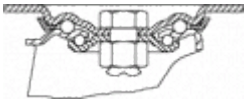
Housing Type	<b>Fixed</b>
Fitting Type	<b>Plate</b>
Braking System	<b>Without Brake</b>
Material	<b>Rubber</b>
Bearing	<b>Ball</b>
Diameter (mm)	<b>160</b>
Width of tyre (mm)	<b>40</b>
Plate dimensions (mm)	<b>136x116</b>
Distance between holes (mm)	<b>105x80</b>
Plate hole diameter (mm)	<b>10</b>
Overall height (mm)	<b>201</b>
Load	<b>160</b>
Unit Weight of the wheel (kg)	<b>1.968</b>
Volume (cm <sup>3</sup> )	<b>3805</b>

### CAD



To visualize the image with higher resolution and more technical details, please access to the CAD section

Brackets



Made of pressed steel up to 4 mm.Finish: zinc plated finish.Double ball bearing in the swivel head.Universal model for medium-duty loads.Manufactured to European standards EN 12530/12532.

Similar products



2-3550



2-3554



2-3556

Wheel



njected rubber tyre on polypropylene centre

Rolling Resistance Reasonable

Noise during the march Excelent

Floor Protection Excelent