

ZV SERIES-PU 2-2002

EAN 8422202220024



Castors with polypropylene centre and grey injected polyurethane tyre. Especially used to support high-loads up to 200 Kg.

It is used in: logistics transport tools, repair shops, food trolleys, kitchens, canteens, food industry and supermarkets.

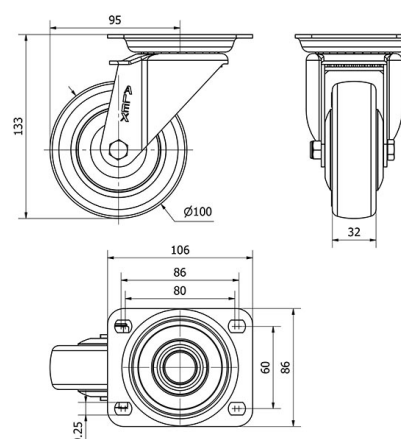
Suitable for mechanical engineering projects by draftsmen and project executors.

PU: long useful life. Noiseless. Clean and undeformable.

Technical Data

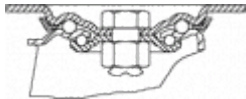
Housing Type	Swivel
Fitting Type	Plate
Braking System	Without Brake
Material	Polyurethane
Hardness of tread	55°-60° SHORE D
Bearing	Ball
Diameter (mm)	100
Width of tyre (mm)	32
Plate dimensions (mm)	106x86
Distance between holes (mm)	86/80x60
Plate hole diameter (mm)	8
Offset (mm)	95
Overall height (mm)	133
Load	175
Unit Weight of the wheel (kg)	0.845
Volume (cm ³)	1706

CAD



To visualize the image with higher resolution and more technical details, please access to the CAD section

Brackets



Made of pressed steel up to 4 mm. Finish: zinc plated finish. Double ball bearing in the swivel head. Universal model for medium-duty loads. Manufactured to European standards EN 12530/12532.

Similar products



2-2009



2-2016

Wheel



Grey polyurethane tyre on polypropylene centre.95° shore A
Temperature range: -25° ÷ +80°

