

ZV SERIES-TA 2-2507

EAN 8422202225074



Steel castors, especially indicated to support high-loads up to 400 Kg. Mainly used in the industrial sector, mining industry, food industry and agricultural farms.

Suitable for mechanical engineering projects by draftsmen and project executors.

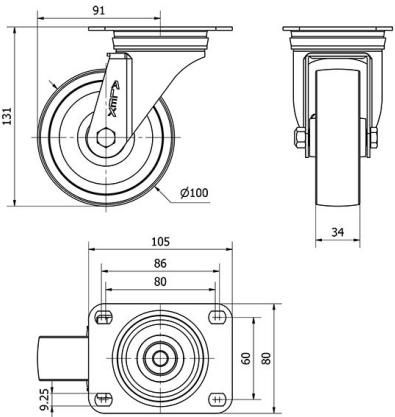
TA: very tough work conditions where the existence of cutting objects, chemical products or high temperatures would destroy other kind of castors. Heavy duty.

For temperatures above 200°C, load (Kg) should be reduced by 40%.

Technical Data

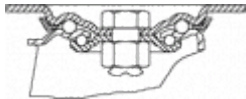
Housing Type	Swivel
Fitting Type	Plate
Braking System	Without Brake
Material	Cast Iron
Bearing	Plain
Diameter (mm)	100
Width of tyre (mm)	34
Plate dimensions (mm)	105x80
Distance between holes (mm)	86/80x60
Plate hole diameter (mm)	8
Offset (mm)	91
Overall height (mm)	131
Load	150
Unit Weight of the wheel (kg)	1.44
Volume (cm ³)	1504

CAD



To visualize the image with higher resolution and more technical details, please access to the CAD section

Brackets



Made of pressed steel up to 4 mm.Finish: zinc plated finish.Double ball bearing in the swivel head.Universal model for medium-duty loads.Manufactured to European standards EN 12530/12532.

Similar products



Wheel



Cast iron wheel
Temperature range: -40° ÷ +300°

Rolling Resistance	Excelent
Noise during the march	Sufficient
Floor Protection	Sufficient